



ANPING KAIXUAN STAINLESS  
STEEL PRODUCTS CO.,LTD



SOURCE  
FACTORY

# ▶ Pipe Fittings & Ball Valves

Email: [info@hbkaixuan.com](mailto:info@hbkaixuan.com)

Web: [www.kxcasting.com](http://www.kxcasting.com)

[www.ssfittingsandvalves.com](http://www.ssfittingsandvalves.com)

Office: 17F-1718, No.49 Zhaiying St, Yuhua District, Shijiazhuang, 050000

Factory: No.17 East industrial Park, Anping county, Hebei, 053600, China





# COMPANY PROFILE



Kaixuan, a professional manufacturing and trading combo, produces and exports stainless steel cast pipe fittings and ball valves, including mini ball valves, Class 150# Threaded pipe fittings, PEX pipe fittings, Press Fittings, Camlock Fittings, Hose Barb Fittings, and other pipe fittings since 2002.

We have established partnerships with more than 500 customers from more than 20 countries. We are delivering premium quality products at competitive prices. Our products have obtained ISO9001, CE, cUPC, and NSF certifications and comply with DIN, ANSI, JIS, and other international standards.



## SUPER HIGH QUALITY

Our company has complete production and testing equipment. The material will be tested before casting. The finished product will be tested twice to achieve the perfect material quality and fully meet the material standards required by customers.



## EXPERIENCED TECHNICAL TEAM

It has a professional design center and technical service center to provide a professional guarantee for product quality and customer experience. We can customize products and provide packaging design services according to customer requirements.

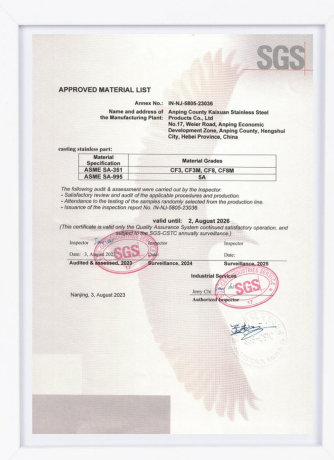


## STRONG PRODUCTION SUPPORT

Our factory covers an area of 20000 square meters, casting workshop of 5000 square meters, machining workshop of 5000 square meters. The monthly production capacity is 150 tons. The self-developed fully automatic mold has a daily production of 3,000 wax parts, three times that of manual molds.

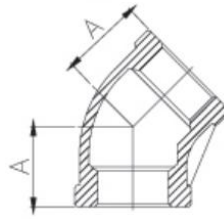


# Certificate



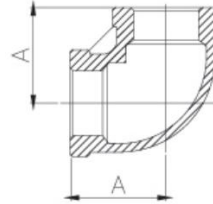
STRONG PRODUCTIVITY AND FAST DELIVERY TIME!

# 150LB Stainless Steel Threaded Fitting



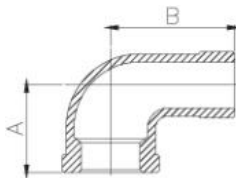
## Elbow 45°

Standard	SIZE	1/8"	1/4"	3/8"	1/2"	3/4"	1"	1¼"	1½"	2"	2½"	3"	4"
SP-114	A	17.5	17.5	20.5	22.0	25.4	28.4	33.2	36.3	42.6	47.0	52.07	64.0
ISO4144	A	16.0	17.0	19.0	21.0	25.0	29.0	33.0	37.0	42.0	49.0	54.0	64.0
ECO-Line	A	15.0	16.0	17.5	20.0	25.0	30.0	32.0	33.0	40.0	41.0	50.0	60.0



## Elbow 90°

Standard	SIZE	1/8"	1/4"	3/8"	1/2"	3/4"	1"	1¼"	1½"	2"	2½"	3"	4"
SP-114	A	20.5	20.5	23.6	28.4	33.2	38.0	44.4	49.0	57.0	62.7	71.9	89.7
ISO4144	A	17.0	19.0	23.0	27.0	32.0	38.0	45.0	48.0	57.0	69.0	78.0	96.0
ECO-Line	A	15.5	17.0	20.0	24.0	28.0	32.0	38.0	43.0	52.0	61.5	72.0	88.0

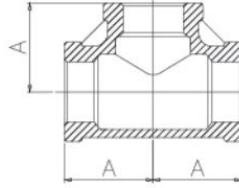


## Street Elbow 90°

Standard	SIZE	1/8"	1/4"	3/8"	1/2"	3/4"	1"	1¼"	1½"	2"	2½"	3"	4"
SP-114	A	20.5	20.5	23.6	28.4	33.2	38.1	44.4	49.0	57.0	63.2	71.6	89.4
	B	26.9	29.9	36.3	41.1	47.4	53.8	63.5	69.8	82.5	91.7	106.4	135.6
ISO4144	A	17.0	19.0	23.0	27.0	32.0	38.0	45.0	48.0	57.0	69.0	78.0	97.0
	B	26.0	28.0	30.0	36.0	40.0	47.0	55.0	57.0	70.0	83.0	94.0	115.0
ECO-Line	A	17.0	19.0	23.0	23.0	32.0	38.0	45.0	48.0	57.0	69.0	78.0	97.0
	B	26.0	27.0	29.0	30.2	40.0	46.0	54.0	57.0	70.0	83.0	94.0	115.0

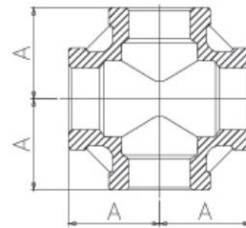


# 150LB Stainless Steel Threaded Fitting



## TEE

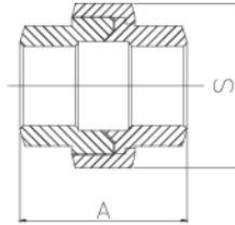
Standard	SIZE	1/8"	1/4"	3/8"	1/2"	3/4"	1"	1¼"	1½"	2"	2½"	3"	4"
SP-114	A	20.5	20.5	23.6	28.4	33.2	38.0	44.4	49.0	57.0	62.7	71.9	89.6
ISO4144	A	17.0	19.0	23.0	27.0	32.0	38.0	45.0	48.0	57.0	69.0	78.0	96.0
ECO-Line	A	14.0	17.0	19.0	24.0	27.0	32.5	40.0	43.0	52.0	62.5	72.0	88.0



## CROSS

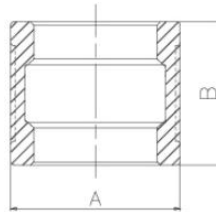
Standard	SIZE	1/8"	1/4"	3/8"	1/2"	3/4"	1"	1¼"	1½"	2"	2½"	3"	4"
SP-114	A	20.5	20.5	23.6	28.4	33.2	38.0	44.4	49.0	57.0	62.7	71.9	89.6
ISO4144	A	17.0	19.0	23.0	27.0	32.0	38.0	45.0	48.0	57.0	69.0	78.0	96.0
ECO-Line	A	14.0	17.0	19.0	24.5	28.0	32.0	38.5	42.5	52.0	62.5	72.0	88.0

# 150LB Stainless Steel Threaded Fitting



## UNION F/F

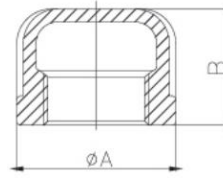
Standard	SIZE	1/8"	1/4"	3/8"	1/2"	3/4"	1"	1¼"	1½"	2"	2½"	3"	4"
SP-114	A	31.1	31.6	34.7	39.7	42.6	48.6	53.9	58.8	63.2	70.6	79.1	91.6
	S	28.5	28.6	33.6	38.6	46.9	57.7	66.7	76.0	89.6	107.4	122.0	151.5
ISO4144	A	26.0	31.5	36.5	39.5	42.5	49.0	54.0	58.0	65.0	75.0	80.5	96.0
	S	25.0	30.5	34.0	37.0	46.0	52.0	65.0	70.0	86.0	105.0	118.0	144.0
ECO-Line	A	25.0	27.0	26.0	30.0	33.0	38.0	43.0	49.0	54.0	58.0	66.0	70.0
	S	25.0	28.0	32.0	36.0	39.5	48.5	59.5	65.0	78.5	95.0	113.0	143.0



## SOCKET BANDED

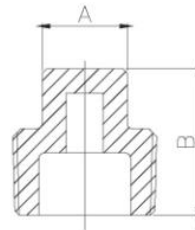
Standard	SIZE	1/8"	1/4"	3/8"	1/2"	3/4"	1"	1¼"	1½"	2"	2½"	3"	4"
SP-114	A	13.0	16.0	20.0	30.5	37.0	45.0	54.6	61.7	75.0	82.0	95.5	121.5
	B	17.0	24.0	25.0	35.0	38.0	41.1	50.8	53.8	63.5	63.0	69.0	81.0
ISO4144	A	13.0	16.0	20.0	24.5	30.0	37.5	46.5	53.0	65.5	82.0	95.5	121.5
	B	17.0	24.0	25.0	32.0	35.0	41.0	45.0	45.0	54.0	63.0	69.0	81.0
ECO-Line	A	12.0	15.6	19.5	25.8	30.4	38.0	47.0	53.0	65.0	79.5	92.0	
	B	17.0	24.0	25.0	32.5	34.0	41.0	45.0	45.0	51.0	58.0	69.0	

# 150LB Stainless Steel Threaded Fitting



## ROUND CAP

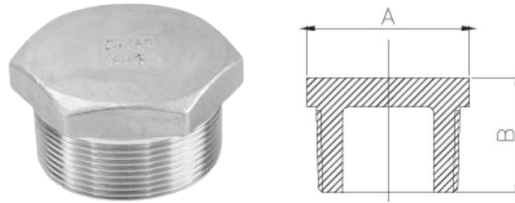
Standard	SIZE	1/8"	1/4"	3/8"	1/2"	3/4"	1"	1¼"	1½"	2"	2½"	3"	4"
SP-114	∅ A	19.0	21.3	25.6	30.4	37.0	44.9	54.6	61.7	75.0	81.0	98.5	124.7
	B	17.2	17.2	20.5	23.6	26.9	33.2	41.0	41.0	44.4	48.5	54.3	60.4
ISO4144	∅ A	13.7	16.7	20.7	25.2	30.7	38.2	47.5	54.0	66.5	83.5	97.0	123.0
	B	13.5	17.0	17.5	21.0	22.5	26.0	29.0	29.0	33.5	38.5	42.0	48.5
ECO-Line	∅ A	13.0	16.0	20.0	23.5	30.0	37.3	46.5	52.0	65.0			
	B	12.5	14.0	15.0	19.0	20.0	24.0	26.0	27.0	29.0			



## SQUARE PLUG

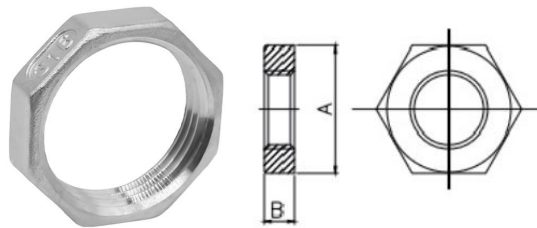
Standard	SIZE	1/8"	1/4"	3/8"	1/2"	3/4"	1"	1¼"	1½"	2"	2½"	3"	4"
SP-114	A	7.0	9.5	11.0	14.2	15.8	20.6	23.8	28.5	33.3	38.1	42.4	56.1
	B	15.3	18.2	19.9	23.8	27.1	31.7	34.5	36.7	39.5	46.0	49.0	56.9
ISO4144	A	6.0	7.0	8.0	10.0	12.0	14.0	16.0	20.0	22.0	28.0	32.0	40.0
	B	13.0	15.5	16.0	20.5	21.5	25.0	27.5	28.5	33.0	37.0	42.0	48.0
ECO-Line	A	7.0	8.5	10.0	11.0	15.0	19.0	22.0	22.0	26.7	31.0	38.0	40.0
	B	11.5	15.5	15.5	19.0	21.5	25.0	29.5	31.0	37.0	35.0	44.0	53.0

# 150LB Stainless Steel Threaded Fitting



## HEX PLUG

Standard	SIZE	1/8"	1/4"	3/8"	1/2"	3/4"	1"	1¼"	1½"	2"	2½"	3"	4"
SP-114	A	12.7	15.7	17.2	22.0	30.4	36.3	44.7	50.8	62.9	74.9	97.3	116.6
	B	12.8	14.6	16.1	19.0	21.5	25.3	27.4	28.8	30.9	38.3	40.1	46.0
ISO4144	A	Hex				Oct				Dec			
		11.0	15.0	18.0	22.0	28.0	35.0	43.5	49.5	62.0	77.5	90.5	117.0
	B	12.0	14.5	16.0	19.5	21.0	24.0	27.0	27.0	32.0	34.0	37.5	44.0
ECO-Line	A	11.0	14.5	18.0	22.0	29.0	35.0	43.5	49.5	62.0	76.5	89.5	114.0
	B	13.0	14.0	15.0	18.5	21.0	23.5	27.0	25.5	32.5	36.0	38.5	39.0

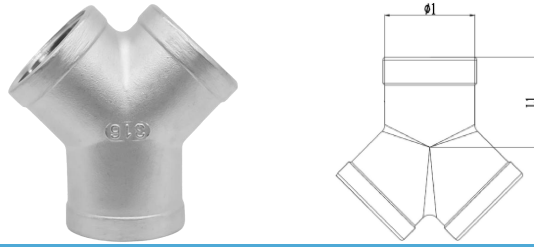


## LOCK NUT

Standard	SIZE	1/8"	1/4"	3/8"	1/2"	3/4"	1"	1¼"	1½"	2"	2½"	3"	4"
SP-114	A	18.0	21.8	25.9	33.8	36.6	44.4	53.8	60.2	73.9	91.7	118.3	148.8
	B	5.3	6.6	7.8	8.4	9.1	9.6	11.1	12.4	14.0	15.7	17.5	21.0
ISO4144	A	Hex				Oct				Dec			
		15.0	18.0	22.0	27.0	32.0	40.0	48.0	55.0	68.0	85.0	100.0	125.0
	B	5.0	6.0	6.0	7.0	7.0	9.0	11.0	11.0	13.0	15.0	17.0	20.0
ECO-Line	A		20.0	22.5	26.0	32.0	39.5	47.0	54.0	62.5			
	B		6.0	6.5	7.0	9.0	10.0	11.0	12.0	13.0			

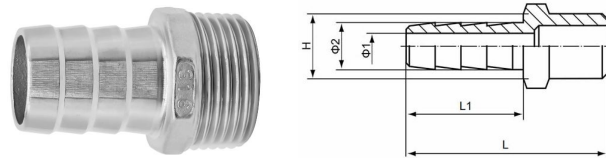


# 150LB Stainless Steel Threaded Fitting



## Y-TEE

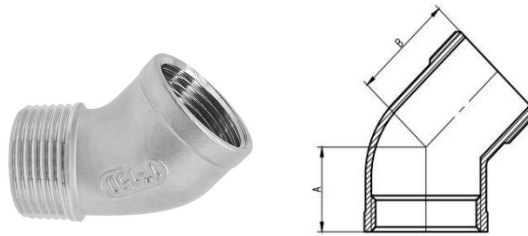
Standard	SIZE	1/8"	1/4"	3/8"	1/2"	3/4"	1"	1¼"	1½"	2"	2½"	3"	4"
SP-114	L1	20.6	20.6	23.6	28.5	33.3	38.1	44.5	49.0	57.1	68.0	77.6	96.8
	Ø1	13.5	15.4	19.7	26.2	31.9	39.8	47.8	55.9	66.5	83.3	98.2	123.0
ISO4144	L1	17.0	19.0	23.0	27.0	32.0	38.0	45.0	48.0	57.0	69.0	78.0	96.0
	Ø1	13.0	16.0	20.0	24.5	30.0	37.5	46.5	53.0	65.5	82.0	95.5	121.5
ECO-Line	L1			20.0	24.0	26.0	34.0	40.0	46.0			54.0	
	Ø1			19.0	24.0	30.8	37.2	44.8	51.6			63.5	



## MALE HOSE NIPPLE

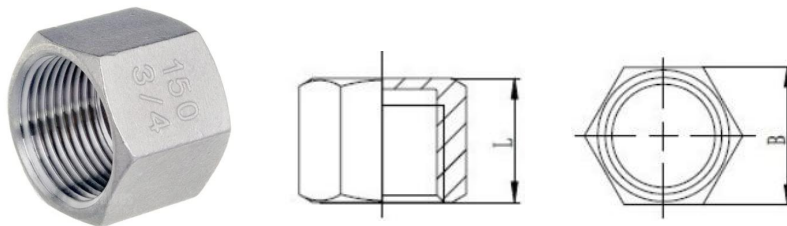
Standard	SIZE	1/8"	1/4"	3/8"	1/2"	3/4"	1"	1¼"	1½"	2"	2½"	3"	4"
SP-114	L	34.0	42.0	45.0	50.0	60.0	70.0	75.0	80.0	90.0	110.0	135.0	150.0
	L1	20.0	24.0	25.0	26.0	35.0	45.0	45.0	46.0	55.0	67.0	92.0	96.0
	Ø 1	4.0	5.0	6.0	9.0	15.0	21.5	27.0	33.0	45.0	55.0	68.0	91.0
	Ø 2	7.0	9.0	10.0	14.0	20.0	27.5	34.0	40.0	52.0	63.5	76.5	103.0
	H	14.0	16.0	19.0	22.0	27.5	36.6	46.0	52.0	63.0	79.0	93.0	118.0
ISO4144	L	38.0	42.5	49.0	57.5	66.0	76.0	79.0	83.0	92.0	99.0	107.5	117.0
	L1	26.0	28.0	33.0	38.0	45.0	52.0	52.0	56.0	60.0	65.0	70.0	73.0
	Ø 1	4.0	5.0	7.0	10.5	15.0	22.0	27.5	34.0	45.0	59.0	71.0	95.0
	Ø 2	8.0	9.0	11.5	15.0	20.0	27.0	33.0	39.5	52.0	67.0	80.0	105.0
	H	11.0	15.0	18.0	22.0	28.0	35.0	43.5	49.5	62.0	77.5	90.5	117.0
ECO-Line	L		41.1	45.0	52.7	52.5	67.0	71.8	70.4	85.3	97.5	104.0	
	L1		26.6	29.0	31.7	32.0	43.0	43.0	44.4	53.0	61.3	70.8	
	Ø 1		5.1	7.0	9.7	15.5	21.8	28.0	35.5	45.0	54.0	73.5	
	Ø 2		9.0	11.0	15.0	20.0	27.0	33.0	40.0	52.0	64.0	80.0	
	H		7.8	11.4	16.0	22.0	28.0	35.4	40.0	51.0	66.9	76.5	

# 150LB Stainless Steel Threaded Fitting



## 45° STREET ELBOW

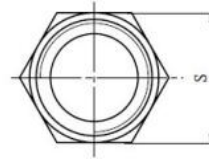
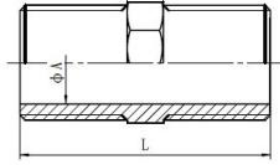
Standard	SIZE	3/8"	1/2"	3/4"	1"	1¼"	1½"	2"	2½"	3"	4"
ISO4144	A	18.0	23.0	25.5	28.0	33.0	35.0	40.0	50.0	56.0	68.0
	B	29.0	32.0	35.5	42.5	44.5	44.5	58.0	70.0	75.0	90.0
Standard	SIZE	1/4"	3/8"	1/2"	3/4"	1"	1¼"	1½"	2"	2½"	3"
ECO-Line	A	17.0	19.0	19.0	20.0	25.0	33.0	39.0	40.0	44.0	75.0
	B	28.0	29.0	27.5	33.5	35.0	40.0	44.0	45.0	73.0	95.0



## HEX CAP

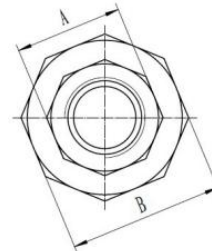
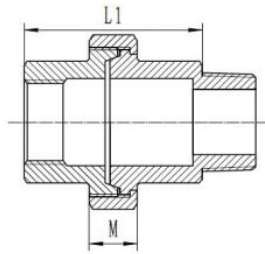
Standard	SIZE	1/8"	1/4"	3/8"	1/2"	3/4"	1"	1¼"	1½"	2"	2½"	3"	4"
ISO4144	B	Hex				Oct				Dec			
		13.5	17.0	20.5	25.0	31.0	38.0	47.0	53.0	66.0	82.0	95.5	121.5
	L	13.5	17.0	17.5	21.0	22.5	26.0	29.0	29.0	33.5	38.5	42.0	48.5
ECO-Line	B	12.5	16.0	19.0	23.5	29.5	36.5	45.5	52.0	64.0	80.0	93.0	119.0
	L	11.5	14.0	15.0	19.0	14.5	16.5	19.0	19.5	29.0	30.0	34.0	38.0

# 150LB Stainless Steel Threaded Fitting



## HEX NIPPLE

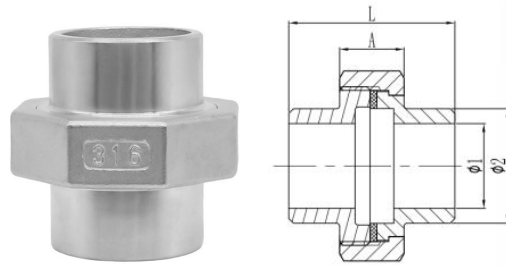
Standard	SIZE	1/8"	1/4"	3/8"	1/2"	3/4"	1"	1 1/4"	1 1/2"	2"	2 1/2"	3"	4"
ISO4144	L	20.0	25.0	27.0	34.0	36.5	42.0	47.5	47.5	57.0	61.0	67.5	80.0
	S	11.0	15.0	18.0	22.0	28.0	35.0	43.5	49.5	62.0	77.5	90.5	117.0
	∅ A	5.5	8.0	11.5	15.0	20.5	26.0	34.5	40.0	51.0	65.5	77.5	101.5
ECO-Line	L	20.0	24.0	27.0	34.0	36.5	42.0	47.5	47.5	57.0	62.0	66.0	73.0
	S	11.0	14.0	18.0	22.0	28.0	35.0	43.5	49.5	61.5	76.5	89.4	115.5
	∅ A	6.0	9.8	13.0	16.4	21.5	28.0	36.0	41.5	53.5	67.0	78.5	102.7



## UNION M/F

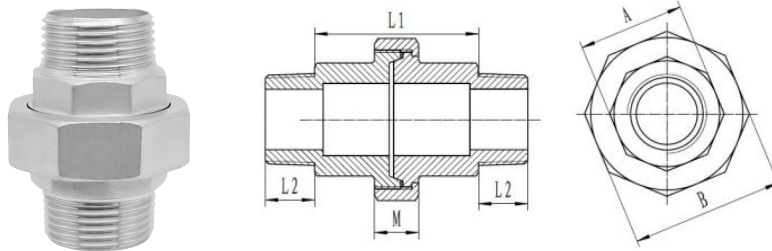
Standard	SIZE	1/8"	1/4"	3/8"	1/2"	3/4"	1"	1 1/4"	1 1/2"	2"	2 1/2"	3"	4"
ISO4144	A	13.5	17.0	20.5	24.5	31.0	38.0	47.0	53.0	66.0	82.0	95.5	121.5
	B	25.0	30.5	34.0	37.0	46.0	52.0	65.0	70.0	86.0	105.0	118.0	144.0
	L1	35.0	44.0	47.5	54.0	58.0	68.0	74.5	78.5	90.0	96.0	108.0	120.0
	M	13.0	13.5	15.5	16.5	18.0	19.0	22.0	24.0	26.0	30.0	31.0	34.0
ECO-Line	A	13.5	17.0	20.0	24.0	29.5	36.5	45.5	51.0	64.0	79.0	92.5	118.5
	B	25.0	28.0	32.0	36.0	39.5	48.5	59.5	65.0	78.5	95.0	113.0	143.0
	L1	25.0	27.0	26.0	30.0	33.0	38.0	43.0	49.0	54.0	58.0	66.0	70.0
	M	11.0	11.0	12.0	12.0	13.0	14.5	16.0	18.0	20.0	22.0	26.0	26.0

# 150LB Stainless Steel Threaded Fitting



## UNION BW

Standard	SIZE	1/8"	1/4"	3/8"	1/2"	3/4"	1"	1¼"	1½"	2"	2½"	3"	4"
ISO4144	A	13.0	13.5	15.5	16.5	18.0	19.0	22.0	24.0	26.0	24.0	26.0	33.2
	L	26.0	35.5	39.5	44.5	46.0	51.0	54.0	57.0	76.0	65.0	79.0	93.5
	Ø 1	6.2	8.8	12.5	16.0	21.6	27.2	35.9	41.8	53.0	68.8	80.8	105.3
	Ø 2	10.2	13.5	17.2	21.3	26.9	33.7	42.4	48.3	60.3	76.1	88.9	114.3
ECO-Line	A	11.0	11.0	12.0	12.0	13.0	14.5	16.0	18.0	20.0	22.0	26.0	26.0
	L	24.0	33.0	36.0	38.0	40.0	46.5	51.0	55.0	60.0	62.0	74.5	86.0
	Ø 1	5.0	8.0	11.2	15.3	20.0	27.7	36.2	40.0	52.0	69.0	79.0	105.3
	Ø 2	10.2	13.4	17.0	21.1	26.6	33.5	42.4	48.3	60.5	76.6	89.6	114.3

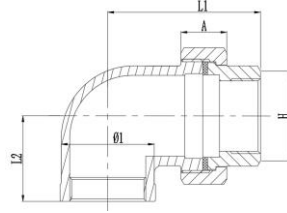


## UNION M/M

Standard	SIZE	1/8"	1/4"	3/8"	1/2"	3/4"	1"	1¼"	1½"	2"	2½"	3"	4"
ECO-Line	A	13.5	17.0	20.0	24.0	29.5	36.5	45.5	51.0	64.0	79.0	92.5	118.5
	B	25.0	28.0	32.0	36.0	39.5	48.5	59.5	65.0	78.5	95.0	113.0	143.0
	L1	25.0	27.0	26.0	30.0	33.0	38.0	43.0	49.0	54.0	58.0	66.0	70.0
	L2	8.0	10.5	11.7	14.5	16.5	19.0	21.5	21.5	24.0	25.0	30.5	35.0
	M	11.0	11.0	12.0	12.0	13.0	14.5	16.0	18.0	20.0	22.0	26.0	26.0

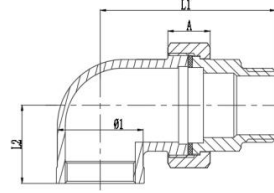


# 150LB Stainless Steel Threaded Fitting



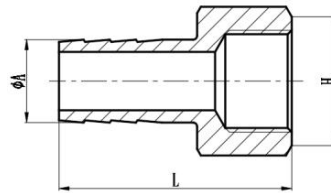
## 90° UNION ELBOW F/F

Standard	SIZE	1/8"	1/4"	3/8"	1/2"	3/4"	1"	1 1/4"	1 1/2"	2"	2 1/2"	3"	4"
ECO-Line	A		11.0	12.0	12.0	13.0	14.5	16.0	18.0	20.0			
	H		17.0	20.0	24.0	29.5	36.5	45.5	51.0	64.0			
	L1		34.3	38.5	41.7	46.4	54.6	62.2	69.0	80.5			
	L2		17.0	21.0	24.5	27.0	34.0	40.0	45.0	54.0			
	Ø1		15.7	19.0	25.0	30.5	38.5	45.5	51.5	64.5			



## 90° UNION ELBOW M/F

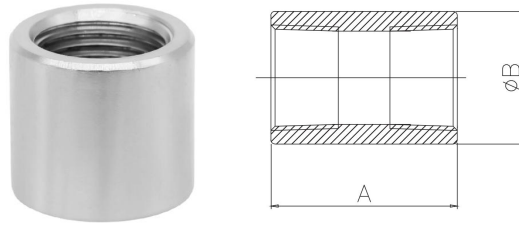
Standard	SIZE	1/8"	1/4"	3/8"	1/2"	3/4"	1"	1 1/4"	1 1/2"	2"	2 1/2"	3"	4"
ECO-Line	A		11.0	12.0	12.0	13.0	14.5	16.0	18.0	20.0			
	L1		44.8	50.2	56.2	63.0	73.6	83.7	90.7	104.5			
	L2		17.0	21.0	24.5	27.0	34.0	40.0	45.0	54.0			
	Ø1		15.7	19.0	25.0	30.5	38.5	45.5	51.5	64.5			



## FEMALE HOSE NIPPLE

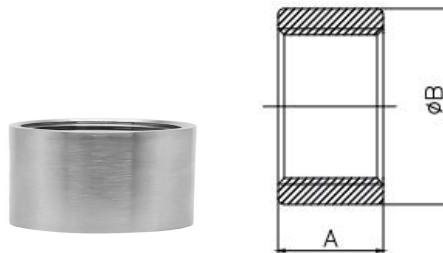
Standard	SIZE	3/8"	3/4"	1"	1 1/4"	1 1/2"	2"						
ECO-Line	ØA	11.0	19.5	25.0	32.0	38.1	51.0						
	L	38.0	50.0	55.0	58.0	72.0	70.0						
	H	19.0	30.5	36.5	45.5	52.5	64.0						

# 150LB Stainless Steel Threaded Fitting



## FULL COUPLING

Standard	SIZE	1/8"	1/4"	3/8"	1/2"	3/4"	1"	1¼"	1½"	2"	2½"	3"	4"
SP-114	A	21.0	24.7	28.2	34.2	38.0	42.5	48.2	51.7	56.0	66.0	71.2	82.0
	Ø B	14.5	17.6	21.0	26.0	30.5	38.2	47.0	52.8	67.8	80.0	97.0	124.0
ISO4144	A	17.0	24.0	25.0	32.0	35.0	41.0	45.0	45.0	54.0	63.0	69.0	81.0
	Ø B	13.0	16.5	20.0	24.5	30.0	37.5	46.5	53.0	65.5	82.0	95.5	121.5
ECO-Line	A	17.0	24.0	25.0	32.0	34.0	41.0	45.0	45.0	54.0	63.0	69.0	81.0
	Ø B	14.0	16.5	20.0	24.5	30.0	37.0	46.5	53.0	65.0	81.5	95.0	121.0

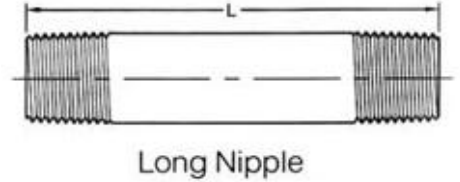
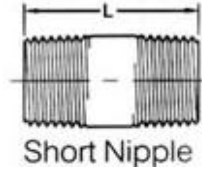
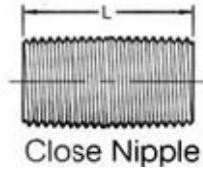


## HALF COUPLING

Standard	SIZE	1/8"	1/4"	3/8"	1/2"	3/4"	1"	1¼"	1½"	2"	2½"	3"	4"
SP-114	A	12.9	13.2	14.5	18.0	19.3	20.8	25.6	27.2	32.0	36.8	40.9	47.5
	Ø B	20.0	22.3	26.6	31.5	37.6	46.0	55.6	64.0	76.4	85.0	102.0	128.8
ISO4144	A	7.5	11.0	11.5	15.0	16.5	19.5	21.5	21.5	26.0	30.5	33.5	39.5
	Ø B	13.0	16.5	20.0	24.5	30.0	37.5	46.5	53.0	65.5	82.0	95.5	121.5
ECO-Line	A	8.0	11.0	11.4	15.0	16.5	19.5	21.5	21.5	26.0	30.5	33.5	40.0
	Ø B	14.0	16.5	20.0	24.5	30.0	37.0	46.5	53.0	65.0	81.5	95.0	121.0

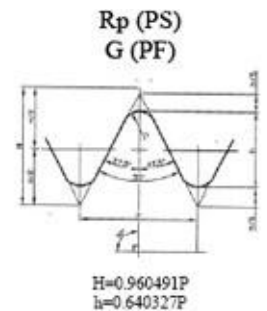
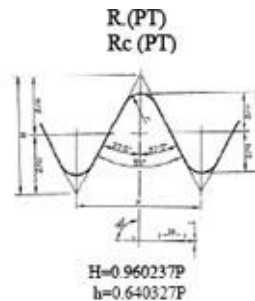
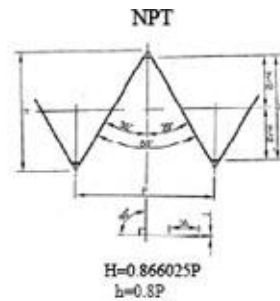


# 150LB Stainless Steel Threaded Fitting

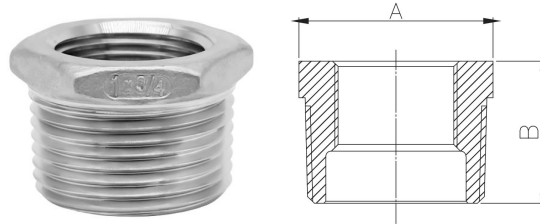


## PIPE NIPPLE

Standard	SIZE	1/8"	1/4"	3/8"	1/2"	3/4"	1"	1 1/4"	1 1/2"
L	Close Nipple	3/4	7/8	1	1-1/8	1-3/8	1-1/2	1-5/8	1-3/4
	Short Nipple	1-1/2	1-1/2	1-1/2	1-1/2	2	2	2-1/2	2-1/2
	Long Nipple	2~12	2~12	2~12	2~12	2-12~12	2-12~12	3~12	3~12
Plain End Weight (kg/m)	Sch40/STD	0.37	0.63	0.84	1.27	1.69	2.50	3.39	4.05
	Sch80/XS	0.47	0.80	1.10	1.62	2.20	3.24	4.47	5.41
	Sch160	/	/	/	1.95	2.90	4.24	5.61	7.25
	XXS	/	/	/	2.55	3.64	5.45	7.77	9.55
Standard	SIZE	2"	2 1/2"	3"	3 1/2"	4"	5"	6"	
L	Close Nipple	2	2-1/2	2-5/8	2-3/4	2-7/8	3	3-1/8	
	Short Nipple	2-1/2	3	3	4	4	4-1/2	4 1/2	
	Long Nipple	3~12	3-1/2~12	3-1/2~12	4-1/2~12	4-1/2~12	5~12	5~12	
Plain End Weight (kg/m)	Sch40/STD	5.44	8.63	11.29	13.57	16.08	21.77	28.26	
	Sch80/XS	7.48	11.41	15.27	18.64	22.32	30.97	42.56	
	Sch160	11.11	14.92	21.35	/	33.54	49.12	67.57	
	XXS	13.44	20.39	27.68	/	41.03	57.43	79.22	



# 150LB Stainless Steel Threaded Fitting

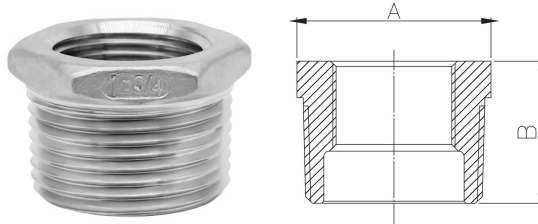


## HEX BUSHING

Standard	SIZE	1/4"		3/8"		1/2"			3/4"			1"	
		1/8"	1/8"	1/4"	1/8"	1/4"	3/8"	1/8"	1/4"	3/8"	1/2"	1/4"	3/8"
SP-114	A	16.7		21.0	22.1	22.1	22.1		26.8	26.8	26.8	34.8	34.8
	B	18.0		19.0	19.0	19.0	19.0		21.3	21.3	21.3	25.3	25.3
ISO4144	A	14.0	18.0	18.0	22.0	22.0	22.0	27.5	27.5	27.5	27.5	34.5	34.5
	B	16.0	16.5	16.5	20.0	20.0	20.0	21.0	21.0	21.0	21.0	24.5	24.5
ECO-Line	A	14.0	18.0	18.0	22.0	22.0	22.0		28.0	27.5	27.5	34.5	34.5
	B	13.0	16.8	16.8	19.0	18.5	18.5		21.0	20.0	20.0	23.3	23.3
Standard	SIZE	1"		1 1/4"			1 1/2"		2"				
		1/2"	3/4"	1/2"	3/4"	1"	1/2"	3/4"	1/2"	3/4"	1"	1 1/4"	1 1/2"
SP-114	A	34.8	34.8	44.3	44.3	44.3		50.7		63.4	63.4	63.4	63.4
	B	25.3	25.3	27.6	27.6	27.6		28.2		30.8	30.8	30.8	30.8
ISO4144	A	34.5	34.5	43.0	43.0	43.0	49.0	49.0	61.0	61.0	61.0	61.0	61.0
	B	24.5	24.5	27.5	27.5	27.5	28.5	28.5	33.0	33.0	33.0	33.0	33.0
ECO-Line	A	34.0	34.0	43.5	43.5	42.6	49.0	49.5	61.0	61.0	61.0	61.0	61.0
	B	20.5	20.5	25.5	25.5	27.0	27.5	25.5	31.5	31.5	31.5	31.5	31.5



# 150LB Stainless Steel Threaded Fitting

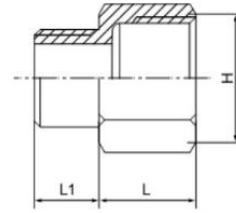


## HEX BUSHING

Standard	SIZE	2½"			3"					4"			
		1¼"	1½"	2"	1"	1¼"	1½"	2"	2½"	1"	1¼"	1½"	2"
SP-114	A	74.7	74.7	74.7	92.2	92.2	92.2	92.2	92.2		116.6	116.6	116.6
	B	37.6	37.6	37.6	40.1	40.1	40.1	40.1	40.1		48.0	48.0	48.0
ISO4144	A	80.5			90.5		95.5						
	B	37.0	37.0	37.0	40.0	40.0	40.0	40.0	40.0	46.0	46.0	46.0	46.0
ECO-Line	A		76.5	76.5				89.4	89.4				
	B		35.5	35.5				40.0	40.0				

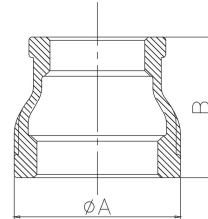
Standard	SIZE	4"	
		2½"	3"
SP-114	A	116.6	116.6
	B	48.0	48.0
ISO4144	A		
	B	46.0	46.0
ECO-Line	A	115.0	115.0
	B	43.0	43.0

# 150LB Stainless Steel Threaded Fitting



## NEGATIVE HEXAGON BUSHING

Standard	SIZE	1/4"	3/8"	1/2"		3/4"		1"		1 1/4"			
		1/8"	1/4"	1/4"	3/8"	3/8"	1/2"	1/2"	3/4"	3/4"	1"		
ECO-Line	L	10.5	14.0	14.0	13.7	15.0	15.0	16.0	16.0	22.0	21.0		
	L1	8.0	10.5	10.5	11.0	11.0	14.5	14.0	15.5	15.5	18.0		
	H	15.5	19.5	24.0	24.0	29.5	29.5	36.5	36.5	45.5	45.0		

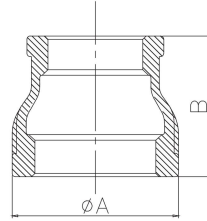


## REDUCING COUPLING

Standard	SIZE	1/4"	3/8"		1/2"			3/4"				1"	
		1/8"	1/8"	1/4"	1/8"	1/4"	3/8"	1/8"	1/4"	3/8"	1/2"	1/4"	3/8"
SP-114	A	21.3		25.4		30.5	30.5		37.0	37.0	37.0		45.0
	B	25.4		28.5		35.0	35.0		38.0	38.0	38.0		41.0
ISO4144	A	16.5	20.0	20.0	25.7	25.7	25.7	31.0	31.0	31.0	31.0	38.0	38.0
	B	25.0	23.0	26.0	34.0	34.0	34.0	36.0	36.0	36.0	36.0	36.0	36.0
ECO-Line	A	15.0	19.0	19.0		23.5	23.5		28.0	28.0	28.0		
	B	24.5	25.0	25.0		26.0	28.0		24.5	28.0	26.0		
Standard	SIZE	1"		1 1/4"				1 1/2"				2"	
		1/2"	3/4"	1/4"	3/8"	1/2"	3/4"	1"	1/2"	3/4"	1"	1 1/4"	1/2"
SP-114	A	45.0	45.0			54.5	54.5	54.5	61.7	61.7	61.7	61.7	
	B	41.1	41.1			50.8	50.8	50.8	53.8	53.8	53.8	53.8	
ISO4144	A	38.0	38.0	46.5	47.0	47.0	47.0	47.0	53.0	53.0	53.0	53.0	66.0
	B	42.0	42.0	48.0	48.0	48.0	48.0	48.0	52.0	52.0	52.0	52.0	58.0
ECO-Line	A	36.0	36.0				45.0	45.0		51.0	51.0	51.0	
	B	28.0	32.0				34.5	40.0		40.0	34.0	40.0	



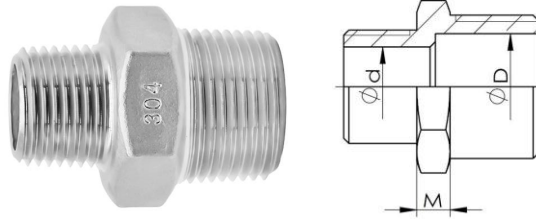
# 150LB Stainless Steel Threaded Fitting



## REDUCING COUPLING

Standard	SIZE	2"				2½"					3"		
		¾"	1"	1¼"	1½"	¾"	1"	1¼"	1½"	2"	1"	1¼"	1½"
SP-114	A	75.0	75.0	75.0	75.0		86.1	86.1	86.1	86.1	103.1	103.1	103.1
	B	63.5	63.5	63.5	63.5		83.0	83.0	83.0	83.0	83.0	83.0	83.1
ISO4144	A	66.0	66.0	66.0	66.0	82.0	82.0	82.0	82.0	82.0	96.5	96.5	96.5
	B	58.0	58.0	58.0	58.0	65.0	65.0	65.0	65.0	65.0	72.0	72.0	72.0
ECO-Line	A			64.0	64.0				80.0	80.0			
	B			43.0	64.0				57.0	53.0			
Standard	SIZE	3"		4"									
		2"	2½"	1"	1¼"	1½"	2"	2½"	3"				
SP-114	A	103.1	103.1				129.8	129.8	129.8				
	B	83.0	83.0				111.5	111.5	111.5				
ISO4144	A	96.5	96.5	123.5	123.5	123.5	123.5	123.5	123.5				
	B	72.0	72.0	94.0	94.0	94.0	94.0	94.0	94.0				
ECO-Line	A	93.0	93.0					121.0	122.0				
	B	52.0	58.0					72.5	56.0				

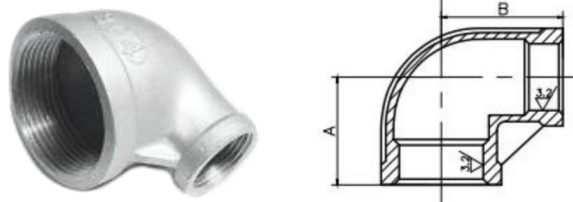
# 150LB Stainless Steel Threaded Fitting



## REDUCER HEX NIPPLE

Standard	SIZE	1/4"			3/8"			1/2"			3/4"			1"	
		1/8"	1/8"	1/4"	1/8"	1/4"	3/8"	1/8"	1/4"	3/8"	1/2"	3/8"	1/2"		
SP-114	M	4.0	5.0	5.0	5.0	5.0	5.0	5.5	5.5	5.5	5.5	6.0	6.0		
	∅ d	5.5	5.5	8.0	5.5	8.0	11.5	5.5	8.5	11.5	15.0	11.5	15.0		
ISO4144	∅ D	8.0	11.5	11.5	15.0	15.0	15.0	20.5	20.5	20.5	20.5	26.0	26.0		
	M	4.0	5.0	5.0		5.0	5.5			5.5	5.5	6.0	6.0		
ECO-Line	∅ d	5.5	5.5	8.0		9.6	12.0			13.2	16.6	13.2	16.6		
	∅ D	8.0	11.5	12.0		16.5	16.5			22.0	22.0	28.0	28.0		
Standard	SIZE	1"		1 1/4"		1 1/2"		2"			2 1/2"				
		3/4"	1/2"	3/4"	1"	3/4"	1"	1 1/4"	1"	1 1/4"	1 1/2"	1"	1 1/4"		
SP-114	M	6.0	6.5	6.5	6.5	6.5	6.5	6.5	7.0	7.0	7.0	7.0	7.0		
	∅ d	20.5	15.0	20.5	26.0	20.5	26.0	34.5	26.0	34.5	40.0	26.0	34.5		
ISO4144	∅ D	26.0	34.5	34.5	34.5	40.0	40.0	40.0	51.0	51.0	51.0	65.5	65.5		
	M	5.8		8.0	6.5		8.0	6.5	9.0	8.0	9.0				
ECO-Line	∅ d	22.0		21.0	28.0		26.7	36.5	26.7	35.2	41.3				
	∅ D	28.0		36.0	36.5		42.0	42.0	52.3	52.3	52.3				
Standard	SIZE	2 1/2"		3"			4"								
		1 1/2"	2"	1 1/2"	2"	2 1/2"	2"	2 1/2"	3"						
SP-114	M	7.0	7.0	7.5	7.5	7.5	8.0	8.0	8.0						
	∅ d	40.0	51.0	40.0	51.0	65.5	51.0	65.5	77.5						
ISO4144	∅ D	65.5	65.5	77.5	77.5	77.5	101.5	101.5	101.5						
	M	9.5	9.5		9.5	9.5		11.0	11.0						
ECO-Line	∅ d	41.3	52.3		52.3	66.6		66.6	78.5						
	∅ D	66.6	66.6		78.5	78.5		102.5	102.5						

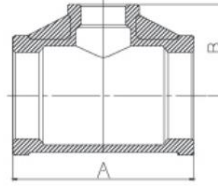
# 150LB Stainless Steel Threaded Fitting



## 90° REDUCER ELBOW

Standard	SIZE	1/4"	3/8"	1/2"		3/4"		1"		1 1/4"		1 1/2"	
		1/8"	1/4"	1/4"	3/8"	3/8"	1/2"	1/2"	3/4"	3/4"	1"	1"	1 1/4"
SP-114	A	22.0	24.0	21.0	26.0	26.5	26.5	32.5	34.0	38.0	40.0	42.0	43.0
	B	20.0	24.0	22.0	25.0	28.0	28.0	34.0	35.0	40.0	40.0	45.0	47.0
ISO4144	A	18.0	20.0	24.0	26.0	28.0	29.0	32.0	34.0	38.0	40.0	41.0	45.0
	B	18.0	22.0	24.0	25.0	28.0	30.0	33.0	35.0	40.0	42.0	45.0	48.0
ECO-Line	A		20.0	24.5	26.0	30.0	29.5	31.0	36.0	40.0	39.0	40.0	41.0
	B		19.0	24.0	25.0	28.0	30.0	33.0	36.0	38.5	41.0	44.0	41.0
Standard	SIZE	2"		2 1/2"		3"		4"					
		1 1/4"	1 1/2"	1 1/2"	2"	2"	2 1/2"	2 1/2"	3"				
SP-114	A	45.0	52.0	54.0	61.0	63.0	70.0	72.0	79.0				
	B	52.0	55.0	60.0	63.0	68.0	71.0	76.0	80.0				
ISO4144	A	48.0	52.0	55.0	60.0	62.0	72.0	78.0	83.0				
	B	54.0	55.0	62.0	65.0	72.0	75.0	90.0	91.0				
ECO-Line	A		53.0										
	B		52.0										

# 150LB Stainless Steel Threaded Fitting

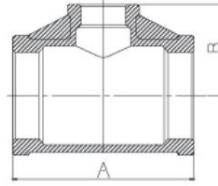


## REDUCING TEE

Standard	SIZE	1/4"		3/8"		1/2"		3/4"				1"	
		1/8"	1/8"	1/4"	1/8"	1/4"	3/8"	1/8"	1/4"	3/8"	1/2"	1/4"	3/8"
SP-114	A	41.2		47.2		56.8	56.8			66.4	66.4		
	B	20.6		20.6		28.4	28.4			33.2	33.2		
ISO4144	A	36.0	38.0	40.0	38.0	48.0	52.0	44.0	48.0	56.0	58.0	52.0	56.0
	B	18.0	20.0	22.0	22.0	24.0	25.0	25.0	28.0	28.0	30.0	32.0	33.0
ECO-Line	A			35.0		40.0	42.0			43.0	50.0		
	B			17.0		19.0	18.5			24.0	28.0		
Standard	SIZE	1"		1 1/4"				1 1/2"				2"	
		1/2"	3/4"	3/8"	1/2"	3/4"	1"	1/2"	3/4"	1"	1 1/4"	1/2"	3/4"
SP-114	A	76.2	76.2			88.8	88.8			98.0	98.0		
	B	38.1	38.1			44.4	44.4			49.0	49.0		
ISO4144	A	64.0	68.0	58.0	68.0	76.0	80.0	68.0	74.0	82.0	90.0	74.0	80.0
	B	33.0	35.0	37.0	37.0	40.0	42.0	40.0	43.0	45.0	48.0	47.0	49.0
ECO-Line	A	52.0	58.0			61.0	70.0			63.0	75.6		
	B	28.5	31.0			35.5	37.0			37.5	41.0		



# 150LB Stainless Steel Threaded Fitting



## REDUCING TEE

Standard	SIZE	2"			2½"						3"		
		1"	1¼"	1½"	1/2"	3/4"	1"	1¼"	1½"	2"	1/2"	3/4"	1"
SP-114	A		114.3	114.3					136.0	136.0			
	B		57.15	57.15					49.0	57.1			
ISO4144	A	88.0	96.0	104.0	78.0	88.0	94.0	104.0	110.0	120.0	88.0	92.0	104.0
	B	51.0	54.0	55.0	53.0	57.0	59.0	62.0	62.0	65.0	59.0	60.0	64.0
ECO-Line	A		92.0	92.0									
	B		44.5	47.5									
Standard	SIZE	3"				4"							
		1¼"	1½"	2"	2½"	1"	1¼"	1½"	2"	2½"	3"		
SP-114	A			155.2	155.2						193.6	193.6	
	B			57.1	68.0						68.0	77.6	
ISO4144	A	112.0	118.0	124.0	144.0	112.0	120.0	128.0	140.0	380.0			
	B	68.0	68.0	72.0	75.0	78.0	82.0	82.0	86.0	90.0	91.0		
ECO-Line	A												
	B												



## CONTACT US

# Anping County KaiXuan Stainless Steel Products Co., Ltd

**Email:** [info@hbkaixuan.com](mailto:info@hbkaixuan.com)

**Web:** [www.kxcasting.com](http://www.kxcasting.com) [www.ssfittingsandvalves.com](http://www.ssfittingsandvalves.com)

**Office:** 17F-1718, No.49 Zhaiying St, Yuhua District, Shijiazhuang, 050000

**Factory:** No.17 East industrial zone, Anping county, Hebei, 053600, China



WhatsApp: +86 156 3351 4444